



## President's Corner

The consolidation team has met twice, and issues have been identified that both the teams and the workgroups will be addressing in the next few months.

One issue is that average faculty salaries at GSC are considerably lower than at NGCSU. Although I haven't seen any data, some say that some of our staff have higher salaries than staff

*... issues have been identified that both the teams and the work groups will be addressing in the next few months.*

at North Georgia. Please be assured that, regardless of how salaries may be adjusted, it is not the intention of either institution to cut salaries.

Despite the distractions that the impending consolidation are posing, let's keep our eye on our mission and on continuing to focus on our students and their success.



*Mertha*

## Inside this Issue

Announcements . . . . .	4	Innovative Staff, Teaching Awards . . . . .	5
Archives News . . . . .	3	Intramural Tennis Doubles Tournament . . . . .	3
Black & White Gala . . . . .	5	Mark Your Calendar . . . . .	8
Counseling & Career Services Workshops . . . . .	7	Mock Primary . . . . .	8
CTLL Workshops . . . . .	7	Our College Family . . . . .	2
DFI Team Wins . . . . .	5	Ringin' Our Bells . . . . .	6
Farewell Tea . . . . .	4	Student Center Monitor Transition . . . . .	8
Independent Filmmakers: "A Gift for the Village" . . . . .	2	USG Faculty Development Series . . . . .	3

## Gainesville State History Department presents panels at state meeting

GSC's Department of History and Anthropology had a good showing at the annual meeting of the Georgia Association of Historians in Macon February 23–25, 2012. GSC faculty and former students participated in two back-to-back environmental history sessions.

The first panel was chaired by **Dr. Jeff Pardue** and featured former GSC student Mr. Anthony Sadler discussing "The Human Enterprise: Air Pollution in the Great Smoky Mountains." Sadler is currently a student at the University of Georgia and serves as **Dr. Clay Ouzts'** teaching assistant.

Sadler was followed by Ms. Crystal Guest, who spoke about "The Historical Impact of Coal Mining on the Environment in Kentucky and the Appalachian Mountains." Guest graduated from GSC in December 2011. Both her paper and that of Sadler were originally research papers for Dr. Ouzts' Environmental History class.

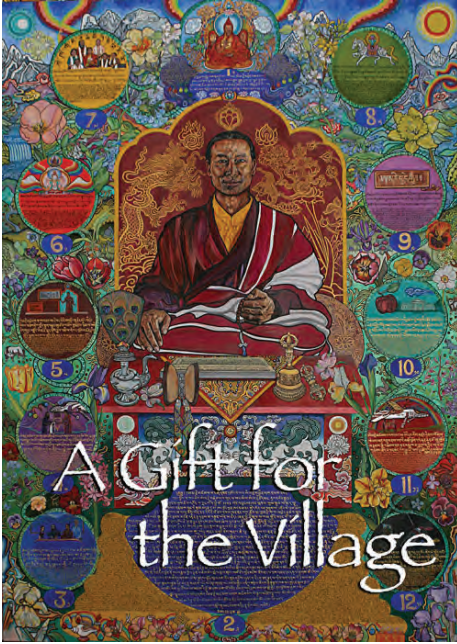
The last paper in the first panel was given by Dr. Ouzts about "Oglethorpe County's King Cotton Blues." Dr. Ouzts' focus was on invasive species and the transformation that cotton and its related invasives wrought on Oglethorpe County and throughout the Georgia Piedmont area. **Dr. Johanna Rickman** served as the discussant for this first panel, and she provided a lively critique of the papers.

The second panel was also chaired by Dr. Pardue and began with **Dr. Pam Sezgin** speaking about "Landscapes and Memory: Reconstructing the Ethnobotany of Smith

—See "History Department presents" on Page 2

## Southern Circuit Tour of Independent Filmmakers

# GSC & The Arts Council present "A Gift for the Village"



The Arts Council and Gainesville State College are bringing *A Gift for the Village* to the Smithgall Arts Center as the next film in the Southern Circuit Tour of Independent Filmmakers. The screening will be at 7:30 PM on Friday, March 23. Ticket prices of \$7 for adults and \$5 for Students/Seniors include a "Meet the Filmmaker" Q&A session following the movie.

*A Gift for the Village*, directed and produced by Tom Landon and Jenna Swann, examines the connections between an American Community and a remote Himalayan region both fighting to heal and deal with different obstacles

In June of 2007, seven friends traveled from the Blue Ridge Mountains of

Virginia to the village of Jomsom in the Himalayas of Nepal to deliver a painting by American artist Jane Lillian Vance. The painting depicts Tsampa Ngawang, a Tibetan Amchi, or doctor and mind healer.

The film is narrated by Public Radio's Lisa Mullins. The cross-cultural project has received the blessing of his Holiness the Dalai Lama and examines the connections between an American community reeling in the face of the killings at Virginia Tech and a remote Himalayan region fighting to preserve its way of life in the face of encroaching modernization.

For more information or to purchase tickets, call (770) 534-2787 or visit <http://theartscouncil.net/>

## Our College Family

Marine Pfc Sean Adams, brother of GSC student Josh Adams, was severely injured in Afghanistan. He is now at Walter Reed National Military Medical Center in Maryland. He is facing a long road to recovery. If you would like to help this family with expenses, the bookstore (*GC*) has a donation jar set up at the register.

Heartfelt sympathies to **Drs. Carly and Ben Wynne** and their family on the recent death of their infant son, Malcolm Womack Wynne.

Sincere condolences to **Jerry Graveman** and his family on the recent death of his mother, Helen Graveman.

Deepest sympathies to **Joey Waters** and his family on the death of his mother, Burice Bowden Waters, age 92, on Saturday, Feb. 18.

Sincere condolences to **Joslyn Hilliard** and her family on the death of her husband's 104-year-old grandmother, Bessie Flinn Howard, on Sunday, Feb. 26.


## History Department presents

—Continued from Page 1

Plantation." The Archibald Smith Plantation Home is a historic 1840s house that is now a museum owned by the City of Roswell. Dr. Sezgin discussed the problems and challenges in uncovering and reconstructing the original landscapes of the property and their educational value.

She was followed by **Dr. Dee Gillespie**, who spoke about "Everything Below 1085: Relocation in the Chattahoochee River Valley, 1950-1959." Dr. Gillespie discussed the current Lake Lanier Oral History Project, in which her students in the Service Learning class have been interviewing people whose families were relocated by the federal government in the 1950s as Lake Lanier was created. Dr. Gillespie shared some of the oral histories, as well as some of the documentary evidence kept by the Army Corps of Engineers, such as photographs of farm buildings and communities that were taken during the lake's construction. Lake Lanier,

today, covers former communities, stores, farms, and homes, providing an opportunity for GSC students to discover the hidden histories of places that no longer exist. This topic was fascinating to the conference participants, and many questions followed Dr. Gillespie's presentation.



P.O. Box 1358  
Gainesville, Georgia 30503  
[www.gsc.edu](http://www.gsc.edu)

**TOWER TALK** is the official communication vehicle for Gainesville State College faculty and staff members and is published biweekly by the Office of Public Relations and Marketing. Submissions for the next edition should be emailed to [dkrewson@gsc.edu](mailto:dkrewson@gsc.edu) or sent to Debbie Krewson, Public Relations & Marketing, to be received by noon, Wednesday, March 14, 2012.



## Archives News

—by Rebecca Homan

Occasionally I come across a great group shot of past professors. We finally decided this was 1981, the year before Dr. Webster retired and Rick Coker took her position. Thanks to Christy Yeager for help with the names.

I hope department chairs will take photos of your professors this year also, since we are documenting the 50th anniversary of the college.

*Pictured: Front (l to r): Dr. Barbara Webster (Math), Dr. Lewis Rogers (Geology), Dr. Martha Hatcher (Biology and Chair of the Division of Natural Sciences & Mathematics), Dr. Glenda Michaels (Biology), Christy Gregory (Math), Billy Taylor (Math & Math Dept. Chair); Back (l to r): Garry McGlaun (Chemistry), Carol Elrod (Math), Deborah Bolding (Math)*

## INTRAMURAL TENNIS DOUBLES TOURNAMENT

Single-Elimination Tournament Begins  
March 26

Men's Doubles, Women's Doubles, & Mixed Doubles

Open to all GSC Students, Faculty, and Staff

Entry forms are available in the PE Building: Room  
103, Security Desk, & in front of Fitness Center

Questions? Lisa Watson, [lwatson@gsc.edu](mailto:lwatson@gsc.edu) or ext. 3646

**DON'T  
FORGET  
TO "SPRING  
FORWARD"  
ON MARCH 11!**



## Faculty Development Series Continues

The USG Faculty Development Series continues this month with two sessions.

The first, "Marketing Your Program through Social Media," is an online session on Wednesday, March 14. Have you ever wondered how to use Facebook or Twitter to "get the word out" about your program? This session will explore how to use these media effectively. The presenter is Melanie Clay from the University of West Georgia.

On Friday, March 30, Peter Lindsay of Georgia State University will present "Class From Hell." What do you do when, with 12 long weeks to go, you realize that you have the class from hell—one you dread walking into? What did you do? What made it the class from hell? Was it the disruptive student? Was it you? Learn some techniques to work with such classes. This session will be held at Georgia Southwestern State University in Americus.

Registration is free for all USG Faculty Development Series sessions. They will begin at 10 AM and conclude no later than 4 PM.

Register online at [http://www.usg.edu/faculty\\_affairs/workshops/category/academic\\_year\\_2011-2012/](http://www.usg.edu/faculty_affairs/workshops/category/academic_year_2011-2012/)

If you have any questions or suggestions for future faculty development sessions, please email Dr. Michael S. Rogers, Assistant Vice-Chancellor of Faculty Development, [mike.rogers@usg.edu](mailto:mike.rogers@usg.edu), or call (706) 583-2207.

# Announcements



The Digital Media Group has received several last-minute service requests and changes—even surprise events—lately, and this lack of planning has caused lots of unnecessary stress for our part-time and student workers, whose schedules are planned over a week in advance.

**Please** submit a request for events requiring AV setup, videotaping, photography, and graphic work. Please also check to make sure any event where service has been requested is properly detailed. If you are the liaison between the media group and an external guest, please make sure the media group has all the details, or place

the guest in contact directly with them if necessary.



If you are requesting reimbursement for travel to/from NGCSU, please remember that mileage should be calculated to/from your home-based campus to/from NGCSU. Make sure you attach a map for all mileage. If you are traveling from your residence, you may use this as the start/end point if the mileage is less. If the mileage is more, you may only use your residence if the travel occurs on a weekend or holiday.

Also, please attach a meeting agenda, email, or some other form of documentation showing what the travel was for.

According to Yahoo map, GSC (Gainesville Campus) to/from NGCSU is 29.12 miles each direction. Oconee Campus to/from NGCSU is 75.18 miles each direction.



The GSC Alumni Association is pleased to announce three new awards! The awards will be presented at the GSC Alumni Reunion Reception on Friday, April 13. The selection committee will consist of four Alumni Council Members and two Advancement Staff Members. Nominations for the 2012 awards are now open and are due March 7. Please download the appropriate forms at this link: <http://www.gsc.edu/about/external/alumni/PublishingImages/2012%20GSC%20Alumni%20Awards.pdf>

Please call **Jennifer Hendrickson** at ext. 3648 with any questions.



Please be aware that the GSC Office of Information Technology will never ask you to enter user account passwords via email. If you receive an email

with this type of request, be advised that it most likely is a scam. This technique is known as phishing. Phishing is a type of deception designed to steal your valuable personal data, such as credit card numbers, passwords, account data, or other information. Phishing emails can look very legitimate and appear to come from major banks, schools, or companies. If you should receive phishing emails, immediately delete them and do not click any links inside the email or respond. If you receive suspicious email, please feel free to contact IT Support for further assistance.




The library is happy to announce that beginning March 18, Hosch Library at the Gainesville Campus will be open on Sundays from 1 to 6 PM.



GSCWO Members: We have another terrific meeting planned for March, so remember to mark your calendars for Wednesday, March 14, noon to 1 PM, in the Library AV Room. Our guest speaker is **Allison Ainsworth**, Associate Professor of Communication and author of *You Too Can Mow the Grass*. We will also take time to recognize our Spring 2012 Scholarship Recipients.



Mark your calendars! The 2012 Hall County Relay for Life is scheduled for Road Atlanta June 1-2. Visit the Gainesville State College Relay for Life Team web page at [http://main.acsevents.org/site/TR?pg=team&fr\\_id=39721&team\\_id=996946](http://main.acsevents.org/site/TR?pg=team&fr_id=39721&team_id=996946). The team's goal is to raise \$4,000 in support of the American Cancer Society.



*Farewell Tea for Dr. Nesbitt*

Mark your calendars now and plan to join the Gainesville State College Women's Organization for a farewell tea honoring Dr. Martha T. Nesbitt. The drop-in event will give all faculty and staff members an opportunity to personally thank Dr. Nesbitt for her 14½ years of hard work and dedication to GSC.

● ● ●

**Thursday, May 3, 2012**  
**2:00 - 4:00 PM**

Academic IV Building,  
Room 3110, GC

Questions? Amy Lancaster,  
ext. 3409 or [events@gsc.edu](mailto:events@gsc.edu)

# GSC Foundation provides staff, teaching awards

## Innovative Staff Awards

Gainesville State College and the GSC Foundation value innovation and experimentation to facilitate progress and to advance knowledge. The Innovative Staff Awards Program offers funding from the GSC Foundation for staff who desire an opportunity to try something innovative and experimental in their line of work but have not had the financial resources to do so.

In spring semester 2011, Gainesville State College began the Innovative Staff Award (ISA) Program. Permanent full-time and part-time staff may submit an application to the Staff Council for a \$500 stipend for the development and implementation of an innovative idea. This award will be given twice a year to selected applicants whose proposals advance institutional excellence.

An appropriate proposal, for example, may resolve problems with creative solutions that result in increased efficiency and productivity. The award

may cultivate new approaches to service, fresh ways to share knowledge or information, imaginative methods for enhancing quality of life on our campuses, or other inspired work that supports the College's mission.

Applications for Spring 2012 are due March 19.

For an application form and more information, please go to the Staff Council web page at <https://portal.gsc.edu/committees/staffcouncil/Misc%20Documents/Innovative%20Staff%20Award%20%282%29.pdf> or contact Connie Esford ([cesford@gsc.edu](mailto:cesford@gsc.edu)) at 678-717-3930.

## Innovative Teaching Awards

The Innovative Teaching Awards Program offers funding provided by the GSC Foundation for faculty and teaching staff who desire an opportunity to try something innovative and experimental in their

courses but have not had time and/or financial resources to do so.

The funding (from \$600 for a Mini award to \$2,400 for a Major award) is intended as incentive money; recipients should anticipate finding other sources of funding for software, materials, and travel. The GSC Foundation will disperse funding as soon as award decisions are made by the committee rather than at the end of the project.

The Spring 2012 deadline is Monday, March 19.

For an application, please go to the CTLL website at: <http://www.gsc.edu/facstaff/ctll/awards/Pages/InnovativeTeachingProgram.aspx>

## DFI Team wins at state tournaments

The Gainesville State College Debate Forensics Interpretation (DFI) Team won 29 awards at state tournaments in February.

At the Georgia Parliamentary Debate Association state championship parliamentary debate tournament February 17-18 at Valdosta State University, GSC captured the traveling trophy for sustained excellence, along with six other awards for winning teams, elimination round participation, and speaker awards.

On February 25, students from the DFI club attended the Georgia Intercollegiate Forensic Association state speech championship tournament at Southern Polytechnic State University in Marietta. There, nine GSC students garnered 22 awards across 11 different events and placed second overall for the fifth consecutive year.

Berry College won the championship in speech for the 20th straight year.

*The Black and White Gala*

*Latin Dance Contest*

**Saturday, March 17**

**7:00 - 11:00 p.m.**

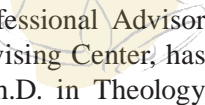
**Student Center  
Gainesville Campus**

**\$5 Students  
\$7 Non-Students**

**Sponsored by the  
Latino Student Association**



# Ringling Our Bells



**Daniel Haynes**, Professional Advisor in the Academic Advising Center, has been awarded his Ph.D. in Theology by the University of Nottingham, UK. His dissertation title was "Grace and Metaphysics in Maximus Confessor."



**Dr. Chris Jonick** attended the USG Faculty Development Series workshop, "Integrating Teaching, Service, and Scholarship: Publishing What You Do Where It Counts" in Athens, Georgia on February 17.



**Gina Reed** attended the 25th Georgia Perimeter College Math Conference in Atlanta and presented a session, "Hands-On Activities To Encourage Student Engagement In Exploring Statistics" on February 17. **Lee Clendenning** also attended the Conference.



**Tonya Butler-Collins** and **Dr. Vincent Ramsey** completed Medical Massage Therapy School in December of 2011 and passed the National Exams for Medical Massage Therapy and the Georgia State Licensing exam.



**Tonya Butler-Collins** and Margaret Shay, a GSC Exercise Science student, attended the 2012 Southeast Collegiate Fitness Expo at Virginia Technical College February 24-26.



**Gina Reed** attended The North Georgia Honors Council Conference in Dahlonega on February 18. One of her honors statistics students, Obadi Obadi, presented his honors project.



Under the coordination of **Dr. Kathy Hunt**, Gainesville State College

hosted the annual meeting of the Board of Regents' Academic Advisory Committee on Mathematical Subjects February 16-17, 2012. Representatives attended from 26 of the USG institutions across the state.



**Dr. Minsu Kim**, **Dr. Danny Lau**, and **Dr. Hashim Saber** attended the 19th Annual Georgia Conference on College and University Teaching at Kennesaw State University February 3-4, 2012. Dr. Lau and Dr. Saber made a joint presentation entitled "A Practice to Succeed! Effective Learner-Centered and Performance-Based Instruction." Dr. Saber also presented "A Curriculum Framework for Designing Effective Instruction."



**Dr. Shannon N. Gilstrap's** article, "Of Pets and People: Matthew Arnold's Pet Elegies & Jules Michelet's The People," has been published in the Spring 2012 issue of *Victorians: Journal of Culture and Literature*. The following blurb was written by the editor, Dr. Deborah Logan: "[The essay] focuses on a little-examined aspect of Arnold's poetry: the elegies written to his pets. Gilstrap notes that the elegies 'run counter to Arnold's poetic aesthetics,' seeming to mock the ideology outlined in his 1853 'Preface.' Viewed in the context of Michelet's intellectual influence, the elegies move beyond the sentimentality associated with mourning one's pets to acquire significant 'political and thematic depth' consistent with and revelatory of Arnold's literary and social views."



**Paula Edney**, Chair & Assistant Professor of Health & Wellness, has been elected into the first class of the Santa Fe College Athletics Hall of Fame. The enshrinement ceremony



will take place on Saturday, March 24 at the Gainesville, Florida College.



**Diane Cook** and **Jill Schulze** presented "Collaborative International Service Programs: Outcomes for Students, Children, and Families in Central America" at the Georgia Consortium for International Studies Conference in Atlanta on Friday, Feb. 24.



**Karen Dodson** presented a paper entitled "Guarding the Treasure: Confining the Vixen" at the South Central Eighteenth-Century Studies Conference in Asheville, Carolina, on February 25.



GSC continues to "Lead the Way" in technology and is prominently featured in the February issue of *Today's Campus* magazine. The article is titled "The Digital Campus" and highlights cutting edge technologies impacting education. Not only is GSC mentioned, but our Virtual Lab and GIS Virtual Lab (used in middle/high school outreach) received top billing as examples of the transformative power of cloud computing.

Congratulations to **GSC IT** and **GIS faculty and staff!!**



**Dr. Martin J. Blackwell**, Assistant Professor of History and Anthropology, presented "The Russia of Today and How It Got There" to the Rotary Club of South Hall County on Wednesday, February 29, 2012. His informative and intriguing talk chronicled the leadership of Vladimir Putin since the 1990s. The majority of the images Dr. Blackwell used in his PowerPoint presentation were images he had personally taken while he was in Russia during various stays.

# CTLL Faculty/Staff Workshops—Spring 2012

For additional information regarding these and other workshops, watch for Notice Board announcements or check our website ([www.gsc.edu/facstaff/ctll/workshops/Pages/default.aspx](http://www.gsc.edu/facstaff/ctll/workshops/Pages/default.aspx)). To register, contact the CTLL Office by email or call ext. 3933.

<b>Friday, 3/2</b>	<b>Advising—First Friday</b> <i>Facilitated by Theresa Lindsey</i>	9:00 - 11:00 AM	Gainesville Campus, ACAD II, Room 183
<b>Fri., 3/2</b>	<b>DegreeWorks</b>	1:00 - 2:00 PM	Gainesville Campus, ACAD III, Room 156
<b>Tues., 3/6</b>	<b>DegreeWorks</b>	8:30 - 9:30 AM	
<b>Mon., 3/12</b>	<b>DegreeWorks</b> <i>Facilitated by Stephanie Stahl</i>	11:00 AM - Noon	
<b>Wed., 3/14</b>	<b>Advising Training</b>	Noon - 1:00 PM	Gainesville Campus, ACAD IV, Room 2203
<b>Thurs., 3/15</b>	<b>Advising Training</b> <i>Facilitated by Gail Barksdale and Mark Nabors</i>	10:00 - 11:00 AM	ACAD III, Room 156
<b>Thurs., 3/15</b>	<b>DegreeWorks</b>	3:15 - 4:30 PM	Oconee Campus, Room 302
<b>Fri., 3/16</b>	<b>DegreeWorks</b> <i>Facilitated by Stephanie Stahl</i>	Noon - 1:00 PM	
<b>Mon., 3/19</b>	<b>PEETT to SEXC</b> <i>Facilitated by Kya Reaves</i>	Noon - 1:00 PM	Gainesville Campus, Library, Room 134; Videoconferenced to Oconee Campus Room 564
<b>Wed., 3/28</b>	<b>Online Testing: To Test or Not to Test Online?</b> <i>Facilitated by Nina Lamson</i>	Noon - 1:00 PM	Oconee Campus, Room 312
<b>Wed., 4/4</b>	<b>Online Testing: To Test or Not to Test Online?</b> <i>Facilitated by Nina Lamson</i>	Noon - 1 PM	Gainesville Campus, ACAD IV, Rm 2123
<b>Fri., 4/6</b>	<b>Advising—First Friday</b> <i>Facilitated by Theresa Lindsey</i>	9:00 - 10:00 AM	Gainesville Campus, ACAD III, Room 191
<b>Wed., 4/11</b>	<b>Veteran Issues: Negotiating College after the Sandbox</b> <i>Facilitated by Kristin Kelly and Christy Orr</i>	Noon - 1:00 PM	Gainesville Campus, ACAD IV, Room 2123

## Counseling & Career Services Workshops—March

Advance registration for these workshops is preferred. Call 678-717-3660 or email [dpierce@gsc.edu](mailto:dpierce@gsc.edu) to register.

**Improving Concentration & Relaxation with Biofeedback Computer Games**      **Wed., Mar. 14**      **Noon & 5 PM**  
Come learn how to use the C & CS biofeedback computer games to improve concentration and relaxation. They are fast, fun, educational, and relaxing.

**Job Fair**      **Tues., Mar. 20**      **10 AM - 1 PM**  
Employers will be on the GSC campus in the Student Center to recruit for part-time, full-time, and seasonal positions.

**Stress Reduction for Health & Wellness**      **Wed., Mar. 21**      **Noon & 5 PM**  
**Thurs., Mar. 22**      **12:30 & 4:30 PM**

STRESS!! We hear about it, talk about it, feel it . . . but what does it really do to our bodies? Come join us to learn about the effects of stress on the body and our overall wellness. Then, spend some time learning some fun strategies that can have significant impacts in fending off and recovering from the effects of chronic stress.

# MOCK PRIMARY

The Gainesville State College Politically Incorrect Club hosted a mock presidential primary on Wednesday, Feb. 29. Students stationed in front of Academic IV and the Student Center on the Gainesville Campus handed out mock primary ballots to interested students, staff, and faculty.

A record turnout of 545 people voted, dwarfing vote totals for similar events in 2004 and 2008.

Because the race was so close, the four vote-counters had four re-counts to make sure the final results, which follow, were completely accurate.

The winner, *by one vote*, was **Ron Paul**. He received 157 student votes, 3 staff votes, and 5 faculty votes, for a total of 165.

**Barack Obama** came in second, with a total of 165 votes (134 student, 11 staff, and 19 faculty votes).

**Newt Gingrich** gathered 94 student votes, 9 staff votes, and 4 faculty votes, for a total of 107.

Far back in the pack was **Mitt Romney** with 67 total votes (59 student, 1 staff, and 7 faculty votes).

**Rick Santorum** managed only 27 student votes, 5 staff votes, and 2 faculty votes, for a total of 34.

**Herman Cain** (3), **Al Sharpton** (1), **George Washington** (1), **Chuck Norris** (1), and **Douglas Young** (1) gathered the remaining student votes.

One student voted for "None of the Above."

The election was designed to encourage more people, especially students, to vote in the real Georgia presidential primary on Tuesday, Mar. 6.

## ✓ Mark your calendar:

- Fri., Mar. 2** **Big Band Show.** 7:30 PM, Ed Cabell Theatre, Continuing Education/Performing Arts Center, GC. GSC Jazz Band, Jazz Combo, and Chorale. Concludes Sat., Mar. 3.
- Mon., Mar. 5** **Spring Break--NO CLASSES.** Through Fri., Mar. 9.
- Sun., Mar. 11** **Daylight Saving Time Begins.** Spring Forward!
- Thurs., Mar. 15** **Phi Theta Kappa Spring Induction Ceremony.** 11 AM - Noon, SRC Room 522, OC; 4 - 6 PM, Robinson Ballroom, Student Center, GC.
- Sat., Mar. 17** **Spring Open House.** 9 AM - Noon, Lobby & Auditorium, CE/PA Center, GC.
- Wed., Mar. 21** **CIRCA Gainesville 2012.** 8 AM - 6 PM, Robinson Ballroom, Student Center, GC. Conference for Innovation, Research, and the Creative Arts. Sponsored by GSC Honors Program.

## Media Services begins transition of Student Center monitors

—by Cara Ray

For several years now, PowerPoints and other files for the TV monitors in the Student Center have been sent to **Cara Ray** for the relatively low-tech slide show. In those few years, great new technology has emerged, and the college has installed it, starting in Academic IV. The process of transitioning the slide show in the Student Center over to Media Services to use their exciting new technology has now begun.

Over spring break, new monitors and other equipment will be installed, after which time, the Student Center monitors will show the same slide shows as are currently seen in Academic IV. Academic IV has numerous monitors showing various presentations; those in the Student Center will show two different presentations. Three of the Student Center monitors will show the "student" presentation, with information about clubs and events; two will show the "cultural" presentation which focuses more on cultural events.

This means that slides will now need to be sent to **Valarie Reeves** (vreeves@gsc.edu) instead of Cara Ray. Valarie coordinates a great deal of AV and Media Services and Web things. The slides must be in PowerPoint format (no jpgs, Publisher documents, Word documents, etc.) and must be sent one week in advance of when they need to go up on screen.

Valarie will publish on Tuesdays and Thursdays, much like it is now done in the Student Center, and she will choose a good start date (generally two weeks in advance of your event) and end date for the slides. Generally, slides that don't refer to a specific event or date will stay up for about three weeks.

Also, please remember that the TV monitors are totally different than the ads that show on the website. Please put in a media services request four weeks in advance for items to be posted on the website. This advertising method is suitable for events to which the whole campus is invited (speakers, etc.) rather than smaller events like regular club meetings.